

SPECIFICATIONS

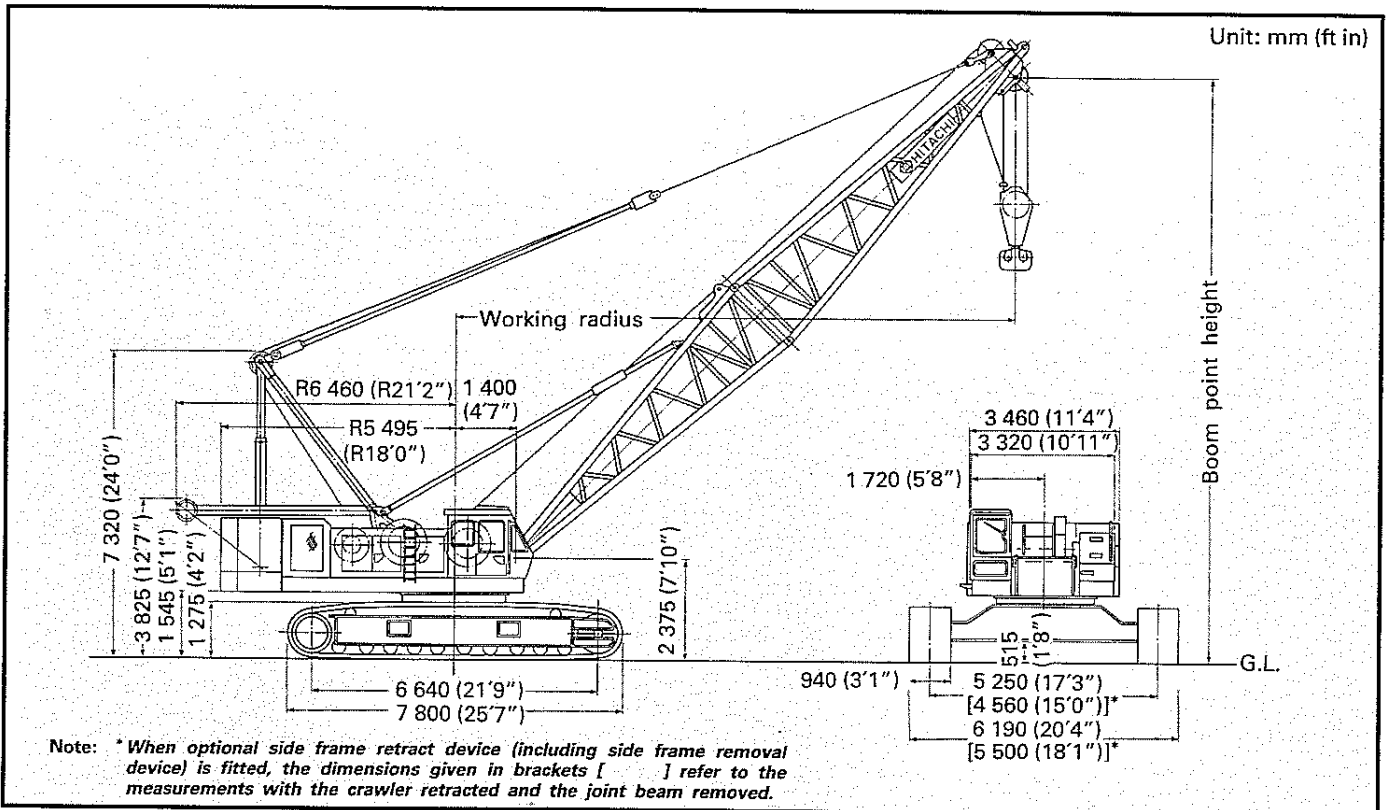


KH500-3

HYDRAULIC CRAWLER CRANE

Max. Lifting Capacity: 100 000kg (220500lb) at 5.5m (18' 1")

Dimensions



Specifications

Maximum rated load		100 000 kg (220 500 lb) at 5.5 m (18'1") working radius
Boom	Basic boom length	16.0 m (52'6")
	Max. boom length	73.0 m (239'6")
	Jib length	9.0 m (29'6") to 22.5 m (73'10")
	Max. boom with jib length	83.5 m (273'11") [61.0 m (200'2") + 22.5 m (73'10")]
Swing speed	High	0 to 2.3 min ⁻¹ (0 to 2.3 rpm)
	Low	0 to 1.4 min ⁻¹ (0 to 1.4 rpm)
Travel speed*	High	0 to 1.3 km/h (0 to 0.81 mph)
	Low	0 to 0.9 km/h (0 to 0.56 mph)
Gradeability		17° (30%)
Ground pressure		0.79 bar (0.79 kgf/cm ² , 11.2 psi)
Operating weight	Equipped with basic boom, 100 000 kg (220 500 lb) capacity hook and 33 000 kg (72 800 lb) counterweight	106 000 kg (233 700 lb)
Engine	Model	ISUZU 6RB1T
	Rated horsepower	206 kW (280 PS) at 2 000 min ⁻¹ (2 000 rpm)

*Speeds may vary with load

HOOKS

Capacity	Weight	Number of hoist reeving and maximum rated loads kg (lb)									
		8	7	6	5	4	3	2	1		
100 000 kg (220 500 lb)	1 400 kg (3 090 lb)	100 000 (220 500)	87 500 (192 900)	75 000 (165 300)	62 500 (137 800)	50 000 (110 200)	37 500 (82 670)	25 000 (55 120)		For main boom	Standard
60 000 kg (132 300 lb)	950 kg (2 090 lb)				60 000 (132 300)	50 000 (110 200)	37 500 (82 670)	25 000 (55 120)			Optional
25 000 kg (55 120 lb)	730 kg (1 610 lb)							25 000 (55 120)			
10 000 kg (22 050 lb)	370 kg (816 lb)								10 000 (22 050)	For Jib or aux. jib	

DRUMS

Dimensions

		Rope dia.	Width	Drum p.c.d.	Rope capacity
Standard winches	Main hoist drum	28 mm (1.10")	575 mm (22.6")	590 mm (23.2")	361 mm (1 184')
	Aux. hoist drum	28 mm (1.10")	575 mm (22.6")	590 mm (23.2")	361 mm (1 184')
Optional winches*	Main hoist drum	30 mm (1.18")	555 mm (21.9")	600 mm (23.6")	333 mm (1 093')
	Aux. hoist drum	30 mm (1.18")	555 mm (21.9")	600 mm (23.6")	333 mm (1 093')

Note: * Optional winches are used mainly for clamshell and dragline.

Line speed and line pull

		Max. line speed m/min (ft/min)		Effective line pull	Line speed	Max. starting line pull	Max. running line pull
		Hoisting	Lowering				
Standard winches	Main hoist drum	65 (213)	65 (213)	184 kN (18 800 kgf) (41 400 lbf)	32 m/min (105 ft/min)	221 kN (22 500 kgf) (49 600 lbf)	245 kN (25 000 kgf) (55 100 lbf)
	Aux. hoist drum	65 (213)	65 (213)	184 kN (18 800 kgf) (41 400 lbf)	32 m/min (105 ft/min)	221 kN (22 500 kgf) (49 600 lbf)	245 kN (25 000 kgf) (55 100 lbf)
Optional winches	Main hoist drum	65 (213)	65 (213)	181 kN (18 500 kgf) (40 800 lbf)	33 m/min (108 ft/min)	217 kN (22 100 kgf) (48 700 lbf)	241 kN (24 600 kgf) (54 200 lbf)
	Aux. hoist drum	65 (213)	65 (213)	181 kN (18 500 kgf) (40 800 lbf)	32 m/min (105 ft/min)	217 kN (22 100 kgf) (48 700 lbf)	241 kN (24 600 kgf) (54 200 lbf)

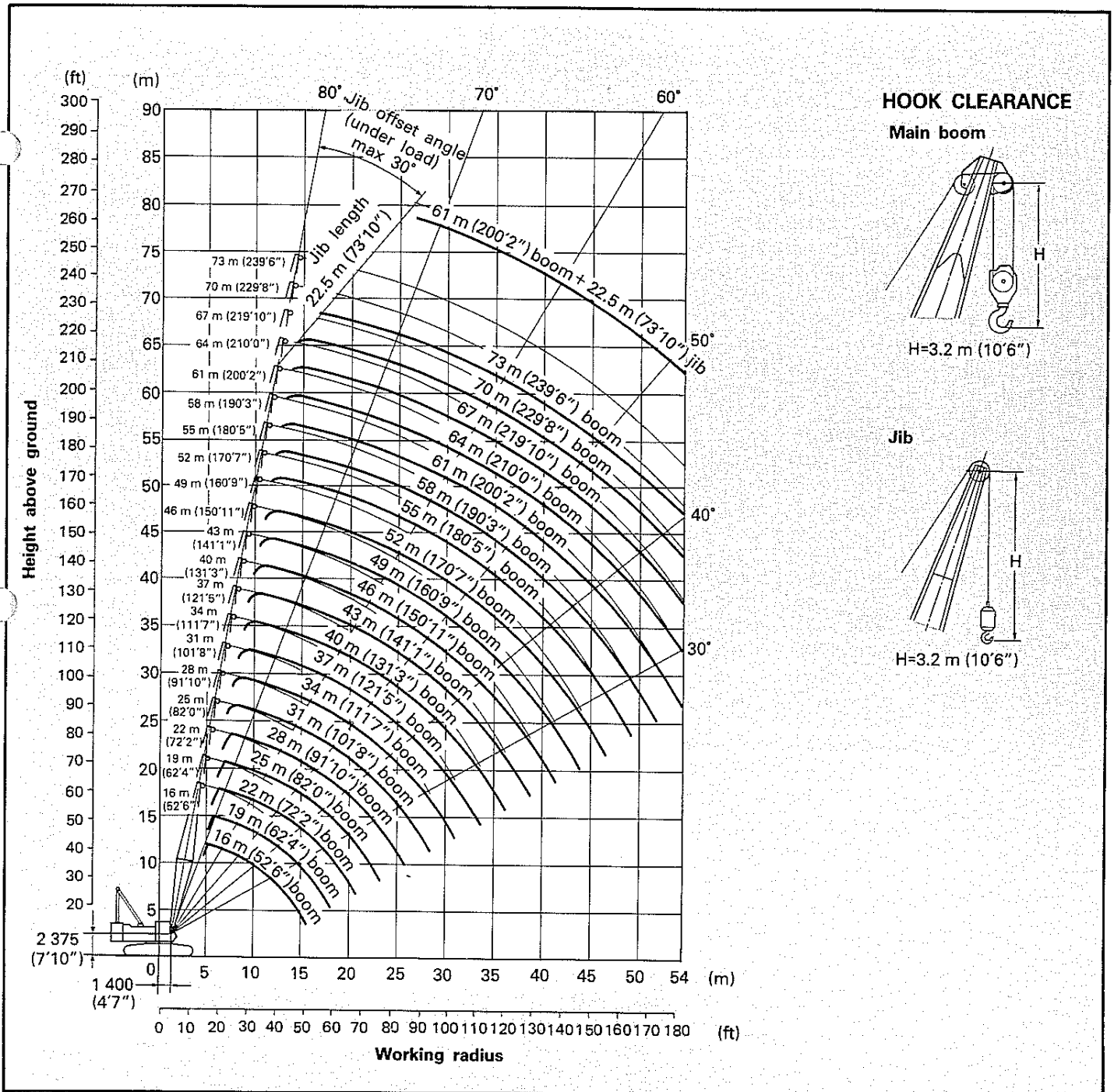
NOTES:

- Line speed and line pull are based on first layer of winding at rated engine rpm.
- Hoisting line speed varies with load.
- Line pull is based on a single line pull in high speed range.
- Effective line pull is equivalent to available line pull of mechanical drive winch.
- When hydraulic motor starts, since it is not rotating line pull is "Max. starting line pull". After motor rotating, the line pull becomes "Max. running line pull" shortly.

BOOM HOIST DRUM

Rope diameter	Hoisting line speed	Lowering line speed
22 mm (0.87")	52 m/min (171 ft/min)	52 m/min (171 ft/min)

Working Ranges



Crane Ratings

JIS Rating:

The rated loads shown don't exceed 78% of tipping loads with the machine on firm level ground.

BS Rating:

The rated loads are determined according to BS (British Standard; 1981) on the condition that the machine is stationed on firm, level ground.

PCSA Rating:

The rated loads listed are determined according to PCSA (Power Crane and Shovel Association in U.S.A.) and do not exceed 75% of tipping load on condition that the machine is stationed on firm, level ground.

Tubular Chord Crane Boom in 360° Working Area

Boom length m(ft in)	Working radius m ft in		Rated load				
			JIS rating	BS rating		PCSA rating	
			kg	kg	lb	kg	lb
16.0 (52'6")	4.6	15'1"	100 000	100 000	220 500	100 000	220 500
	5.0	16'5"	100 000	100 000	220 500	100 000	220 500
	5.5	18'1"	100 000	100 000	220 500	100 000	220 500
	6.0	19'8"	91 600	91 600	201 900	91 000	200 600
	6.5	21'4"	83 200	83 200	183 400	81 600	179 900
	7.0	23'0"	75 000	75 000	165 300	72 100	159 000
	8.0	26'3"	60 600	60 600	133 600	58 200	128 300
	9.0	29'6"	50 600	50 600	111 600	48 700	107 400
	10.0	32'10"	43 400	43 400	95 680	41 800	92 150
	12.0	39'4"	33 700	33 700	74 300	32 400	71 430
	14.0	45'11"	27 400	27 400	60 410	26 400	58 200
15.4	50'6"	22 100	22 100	48 720	22 100	48 720	
19.0 (62'4")	5.1	16'9"	100 000	100 000	220 500	100 000	220 500
	5.5	18'1"	98 700	98 700	217 600	98 700	217 600
	6.0	19'8"	90 800	90 800	200 200	90 200	198 900
	6.5	21'4"	83 000	83 000	183 000	81 600	179 900
	7.0	23'0"	75 100	75 100	165 600	72 100	159 000
	8.0	26'3"	60 600	60 600	133 600	58 200	128 300
	9.0	29'6"	50 600	50 600	111 600	48 700	107 400
	10.0	32'10"	43 400	43 400	95 680	41 800	92 150
	12.0	39'4"	33 700	33 700	74 300	32 400	71 430
	14.0	45'11"	27 400	27 400	60 410	26 300	57 980
	16.0	52'6"	22 900	22 900	50 490	22 100	48 720
18.0	59'1"	18 600	18 600	41 010	18 600	41 010	
22.0 (72'2")	5.7	18'8"	88 100	88 100	194 200	88 100	194 200
	6.0	19'8"	86 200	86 200	190 000	85 700	188 900
	6.5	21'4"	83 000	83 000	183 000	81 600	179 900
	7.0	23'0"	75 000	75 000	165 300	72 100	159 000
	8.0	26'3"	60 500	60 500	133 400	58 200	128 300
	9.0	29'6"	50 600	50 600	111 600	48 600	107 100
	10.0	32'10"	43 300	43 300	95 460	41 700	91 930
	12.0	39'4"	33 500	33 500	73 850	32 300	71 210
	14.0	45'11"	27 200	27 200	59 970	26 200	57 760
	16.0	52'6"	22 800	22 800	50 270	21 900	48 280
	18.0	59'1"	19 500	19 500	42 990	18 800	41 450
20.0	65'7"	17 000	17 000	37 480	16 400	36 160	
20.6	67'7"	16 000	16 000	35 270	15 800	34 830	
25.0 (82'0")	6.2	20'4"	78 000	78 000	172 000	78 000	172 000
	6.5	21'4"	76 800	76 800	169 300	75 800	167 100
	7.0	23'0"	74 900	74 900	165 100	72 000	158 700
	8.0	26'3"	60 400	60 400	133 200	58 100	128 100
	9.0	29'6"	50 500	50 500	111 300	48 600	107 100
	10.0	32'10"	43 300	43 300	95 460	41 600	91 710
	12.0	39'4"	33 500	33 500	73 850	32 200	70 990
	14.0	45'11"	27 100	27 100	59 750	26 100	57 540
	16.0	52'6"	22 700	22 700	50 040	21 800	48 060
	18.0	59'1"	19 400	19 400	42 770	18 700	41 230
	20.0	65'7"	16 900	16 900	37 260	16 300	35 940
22.0	72'2"	14 900	14 900	32 850	14 400	31 750	
23.2	76'1"	13 900	13 900	30 640	13 400	29 540	
28.0 (91'10")	6.7	22'0"	68 100	68 100	150 100	68 100	150 100
	7.0	23'0"	66 300	66 300	146 200	65 800	145 100
	8.0	26'3"	60 300	60 300	132 900	58 000	127 900
	9.0	29'6"	50 400	50 400	111 100	48 400	106 700
	10.0	32'10"	43 100	43 100	95 020	41 500	91 490
	12.0	39'4"	33 300	33 300	73 410	32 000	70 550
	14.0	45'11"	27 000	27 000	59 520	25 900	57 100
	16.0	52'6"	22 500	22 500	49 600	21 700	47 840
	18.0	59'1"	19 200	19 200	42 330	18 500	40 790
	20.0	65'7"	16 700	16 700	36 820	16 100	35 490
	22.0	72'2"	14 700	14 700	32 410	14 200	31 310
24.0	78'9"	13 100	13 100	28 880	12 600	27 780	
25.8	84'8"	11 900	11 900	26 240	11 500	25 350	
31.0 (101'8")	7.2	23'7"	59 900	59 900	132 100	59 900	132 100
	8.0	26'3"	55 600	55 600	122 600	54 700	120 600
	9.0	29'6"	50 200	50 200	110 700	48 300	106 500
	10.0	32'10"	43 000	43 000	94 800	41 400	91 270
	12.0	39'4"	33 200	33 200	73 190	31 900	70 330
	14.0	45'11"	26 800	26 800	59 080	25 800	56 880
	16.0	52'6"	22 400	22 400	49 380	21 500	47 400
	18.0	59'1"	19 100	19 100	42 110	18 400	40 570
	20.0	65'7"	16 600	16 600	36 600	16 000	35 270
	22.0	72'2"	14 600	14 600	32 190	14 100	31 090
	24.0	78'9"	13 000	13 000	28 660	12 500	27 560
26.0	85'4"	11 700	11 700	25 790	11 200	24 690	
28.0	91'10"	10 500	10 500	23 150	10 100	22 270	
28.4	93'2"	10 300	10 300	22 710	9 900	21 830	

Boom length	Working radius		Rated load				
			JIS rating	BS rating		PCSA rating	
m(ft in)	m	ft in	kg	kg	lb	kg	lb
34.0 (111'7")	7.7	25'3"	53 400	53 400	117 700	53 400	117 700
	8.0	26'3"	52 700	52 700	116 200	52 200	115 100
	9.0	29'6"	50 100	50 100	110 500	48 200	106 300
	10.0	32'10"	42 900	42 900	94 580	41 200	90 830
	12.0	39'4"	33 000	33 000	72 750	31 800	70 110
	14.0	45'11"	26 700	26 700	58 860	25 700	56 660
	16.0	52'6"	22 200	22 200	48 940	21 400	47 180
	18.0	59'1"	19 000	19 000	41 890	18 200	40 120
	20.0	65'7"	16 400	16 400	36 160	15 800	34 830
	22.0	72'2"	14 400	14 400	31 750	13 900	30 640
	24.0	78'9"	12 800	12 800	28 220	12 300	27 120
	26.0	85'4"	11 500	11 500	25 350	11 000	24 250
	28.0	91'10"	10 400	10 300	22 710	10 000	22 050
	30.0	98'5"	9 400	9 400	20 720	9 000	19 840
31.0	101'8"	9 000	8 900	19 620	8 600	18 960	
37.0 (121'5")	8.3	27'3"	47 100	47 100	103 800	47 100	103 800
	9.0	29'6"	45 200	45 200	99 650	44 600	98 330
	10.0	32'10"	42 700	42 700	94 140	41 100	90 610
	12.0	39'4"	32 900	32 900	72 530	31 600	69 670
	14.0	45'11"	26 500	26 500	58 420	25 500	56 220
	16.0	52'6"	22 100	22 100	48 720	21 300	46 960
	18.0	59'1"	18 800	18 800	41 450	18 100	39 900
	20.0	65'7"	16 300	16 300	35 940	15 700	34 610
	22.0	72'2"	14 300	14 300	31 530	13 700	30 200
	24.0	78'9"	12 700	12 700	28 000	12 200	26 900
	26.0	85'4"	11 300	11 300	24 910	10 900	24 030
	28.0	91'10"	10 200	10 200	22 490	9 800	21 610
	30.0	98'5"	9 200	9 200	20 280	8 900	19 620
	32.0	105'0"	8 400	8 300	18 300	8 100	17 860
33.6	110'3"	7 800	7 800	17 200	7 500	16 540	
40.0 (131'3")	8.8	28'10"	42 400	42 400	93 480	42 400	93 480
	9.0	29'6"	42 100	42 100	92 810	42 100	92 810
	10.0	32'10"	40 800	40 800	89 950	40 800	89 950
	12.0	39'4"	32 800	32 800	72 310	31 500	69 450
	14.0	45'11"	26 400	26 400	58 200	25 400	56 000
	16.0	52'6"	22 000	22 000	48 500	21 100	46 520
	18.0	59'1"	18 700	18 700	41 230	18 000	39 680
	20.0	65'7"	16 100	16 100	35 490	15 500	34 170
	22.0	72'2"	14 100	14 100	31 090	13 600	29 980
	24.0	78'9"	12 500	12 500	27 560	12 000	26 460
	26.0	85'4"	11 200	11 200	24 690	10 800	23 810
	28.0	91'10"	10 100	10 000	22 050	9 700	21 390
	30.0	98'5"	9 100	9 000	19 840	8 800	19 400
	32.0	105'0"	8 300	8 200	18 080	8 000	17 640
34.0	111'7"	7 600	7 400	16 310	7 300	16 090	
36.0	118'1"	6 900	6 800	14 990	6 700	14 770	
36.2	118'9"	6 900	6 700	14 770	6 600	14 550	
43.0 (141'1")	9.3	30'6"	38 100	38 100	84 000	38 100	84 000
	10.0	32'10"	36 700	36 700	80 910	36 400	80 250
	12.0	39'4"	32 600	32 600	71 870	31 400	69 220
	14.0	45'11"	26 200	26 200	57 760	25 200	55 560
	16.0	52'6"	21 800	21 800	48 060	21 000	46 300
	18.0	59'1"	18 500	18 500	40 790	17 800	39 240
	20.0	65'7"	16 000	16 000	35 270	15 400	33 950
	22.0	72'2"	14 000	14 000	30 860	13 400	29 540
	24.0	78'9"	12 300	12 300	27 120	11 900	26 240
	26.0	85'4"	11 000	11 000	24 250	10 600	23 370
	28.0	91'10"	9 900	9 800	21 610	9 500	20 940
	30.0	98'5"	8 900	8 800	19 400	8 600	18 960
	32.0	105'0"	8 100	8 000	17 640	7 800	17 200
	34.0	111'7"	7 400	7 200	15 870	7 100	15 650
36.0	118'1"	6 700	6 600	14 550	6 500	14 330	
38.0	124'8"	6 200	6 000	13 230	5 900	13 010	
38.8	127'4"	6 000	5 800	12 790	5 700	12 570	
46.0 (150'11")	9.8	32'2"	33 900	33 000	72 750	33 900	74 740
	10.0	32'10"	33 700	32 900	72 530	33 700	74 300
	12.0	39'4"	31 900	31 400	69 220	31 300	69 000
	14.0	45'11"	26 100	26 100	57 540	25 100	55 340
	16.0	52'6"	21 700	21 700	47 840	20 800	45 860
	18.0	59'1"	18 400	18 400	40 570	17 700	39 020
	20.0	65'7"	15 800	15 800	34 830	15 200	33 510
	22.0	72'2"	13 800	13 800	30 420	13 300	29 320
	24.0	78'9"	12 200	12 200	26 900	11 700	25 790
	26.0	85'4"	10 900	10 800	23 810	10 500	23 150
	28.0	91'10"	9 700	9 600	21 160	9 400	20 720
	30.0	98'5"	8 800	8 700	19 180	8 400	18 520
	32.0	105'0"	7 900	7 800	17 200	7 600	16 760
	34.0	111'7"	7 200	7 100	15 650	6 900	15 210
36.0	118'1"	6 600	6 400	14 110	6 300	13 890	
38.0	124'8"	6 000	5 800	12 790	5 800	12 790	
40.0	131'3"	5 500	5 300	11 680	5 300	11 680	
41.4	135'10"	5 200	5 000	11 020	5 000	11 020	
49.0 (160'9")	10.3	33'10"	30 600	28 900	63 710	30 600	67 460
	12.0	39'4"	28 500	27 600	60 850	28 000	61 730
	14.0	45'11"	26 000	26 000	57 320	25 000	55 120
	16.0	52'6"	21 500	21 500	47 400	20 700	45 640
	18.0	59'1"	18 200	18 200	40 120	17 500	38 580
	20.0	65'7"	15 700	15 700	34 610	15 100	33 290
	22.0	72'2"	13 700	13 700	30 200	13 200	29 100
	24.0	78'9"	12 100	12 000	26 460	11 600	25 570
	26.0	85'4"	10 700	10 600	23 370	10 300	22 710
	28.0	91'10"	9 600	9 500	20 940	9 200	20 280
	30.0	98'5"	8 600	8 500	18 740	8 300	18 300
	32.0	105'0"	7 800	7 600	16 760	7 500	16 540
	34.0	111'7"	7 100	6 900	15 210	6 800	14 990
	36.0	118'1"	6 400	6 200	13 670	6 200	13 670
38.0	124'8"	5 900	5 700	12 570	5 600	12 350	
40.0	131'3"	5 400	5 100	11 240	5 200	11 460	
42.0	137'10"	4 900	4 700	10 360	4 700	10 360	
44.0	144'4"	4 500	4 300	9 480	4 400	9 700	

Continued on next page 5

Boom length	Working radius		Rated load					Boom length	Working radius		Rated load				
			JIS rating	BS rating		PCSA rating					JIS rating	BS rating		PCSA rating	
				kg	kg	lb	kg					lb	kg	kg	lb
m(ft in)	m	ft in	kg	kg	lb	kg	lb	m(ft in)	m	ft in	kg	kg	lb	kg	lb
52.0 (170'7")	10.9	35'9"	27 600	25 200	55 560	27 600	60 850	58.0 (190'3")	11.9	39'1"	22 000	18 900	41 670	22 000	48 500
	12.0	39'4"	26 800	24 400	53 790	26 600	58 640		12.0	39'4"	21 900	18 900	41 670	21 900	48 280
	14.0	45'11"	25 400	22 800	50 270	24 800	54 670		14.0	45'11"	20 700	17 900	39 460	20 700	45 640
	16.0	52'6"	21 300	21 300	46 960	20 500	45 190		16.0	52'6"	19 700	17 000	37 480	19 700	43 430
	18.0	59'1"	18 000	18 000	39 680	17 400	38 360		18.0	59'1"	17 800	16 100	35 490	17 100	37 700
	20.0	65'7"	15 500	15 500	34 170	14 900	32 850		20.0	65'7"	15 200	15 200	33 510	14 600	32 190
	22.0	72'2"	13 500	13 500	29 760	13 000	28 660		22.0	72'2"	13 200	13 100	28 880	12 700	28 000
	24.0	78'9"	11 900	11 800	26 010	11 400	25 130		24.0	78'9"	11 600	11 500	25 350	11 100	24 470
	26.0	85'4"	10 500	10 400	22 930	10 100	22 270		26.0	85'4"	10 200	10 100	22 270	9 800	21 610
	28.0	91'10"	9 400	9 300	20 500	9 000	19 840		28.0	91'10"	9 100	8 900	19 620	8 700	19 180
	30.0	98'5"	8 400	8 300	18 300	8 100	17 860		30.0	98'5"	8 100	7 900	17 420	7 800	17 200
	32.0	105'0"	7 600	7 400	16 310	7 300	16 090		32.0	105'0"	7 300	7 100	15 650	7 000	15 430
	34.0	111'7"	6 900	6 700	14 770	6 600	14 550		34.0	111'7"	6 600	6 300	13 890	6 300	13 890
	36.0	118'1"	6 200	6 000	13 230	6 000	13 230		36.0	118'1"	5 900	5 700	12 570	5 700	12 570
	38.0	124'8"	5 700	5 400	11 910	5 500	12 130		38.0	124'8"	5 400	5 100	11 240	5 200	11 460
	40.0	131'3"	5 200	4 900	10 800	5 000	11 020		40.0	131'3"	4 900	4 600	10 140	4 700	10 360
	42.0	137'10"	4 700	4 500	9 920	4 500	9 920		42.0	137'10"	4 400	4 100	9 040	4 200	9 260
	44.0	144'4"	4 300	4 100	9 040	4 200	9 260		44.0	144'4"	3 900	3 700	8 160	3 900	8 600
46.0	150'11"	3 900	3 700	8 160	3 800	8 380	46.0	150'11"	3 500	3 300	7 280	3 500	7 720		
46.6	152'11"	3 800	3 600	7 940	3 700	8 160	48.0	157'6"	3 100	3 000	6 610	3 100	6 830		
55.0 (180'5")	11.4	37'5"	25 000	21 600	47 620	25 000	55 120	61.0 (200'2")	12.4	40'8"	19 500	16 500	36 380	19 500	42 990
	12.0	39'4"	24 500	21 200	46 740	24 400	53 790		14.0	45'11"	18 700	15 900	35 050	18 700	41 230
	14.0	45'11"	22 900	20 100	44 310	22 450	49 490		16.0	52'6"	17 700	15 200	33 510	17 700	39 020
	16.0	52'6"	21 200	19 000	41 890	20 400	44 970		18.0	59'1"	16 800	14 400	31 750	16 800	37 040
	18.0	59'1"	17 900	17 900	39 460	17 200	37 920		20.0	65'7"	15 000	13 700	30 200	14 500	31 970
	20.0	65'7"	15 400	15 400	33 950	14 800	32 630		22.0	72'2"	13 000	12 900	28 440	12 500	27 560
	22.0	72'2"	13 400	13 300	29 320	12 900	28 440		24.0	78'9"	11 400	11 300	24 910	11 000	24 250
	24.0	78'9"	11 700	11 700	25 790	11 300	24 910		26.0	85'4"	10 000	9 900	21 830	9 700	21 390
	26.0	85'4"	10 400	10 300	22 710	10 000	22 050		28.0	91'10"	8 900	8 700	19 180	8 600	18 960
	28.0	91'10"	9 200	9 100	20 060	8 900	19 620		30.0	98'5"	7 900	7 700	16 980	7 600	16 760
	30.0	98'5"	8 300	8 100	17 860	8 000	17 640		32.0	105'0"	7 100	6 900	15 210	6 800	14 990
	32.0	105'0"	7 400	7 300	16 090	7 200	15 870		34.0	111'7"	6 400	6 100	13 450	6 100	13 450
	34.0	111'7"	6 700	6 500	14 330	6 500	14 330		36.0	118'1"	5 700	5 500	12 130	5 500	12 130
	36.0	118'1"	6 100	5 900	13 010	5 900	13 010		38.0	124'8"	5 200	4 900	10 800	5 000	11 020
	38.0	124'8"	5 500	5 300	11 680	5 300	11 680		40.0	131'3"	4 700	4 400	9 700	4 500	9 920
	40.0	131'3"	5 000	4 800	10 580	4 800	10 580		42.0	137'10"	4 200	3 900	8 600	4 100	9 040
	42.0	137'10"	4 600	4 300	9 480	4 400	9 700		44.0	144'4"	3 700	3 500	7 720	3 700	8 160
	44.0	144'4"	4 200	3 900	8 600	4 000	8 820		46.0	150'11"	3 300	3 100	6 830	3 300	7 280
46.0	150'11"	3 800	3 500	7 720	3 700	8 160	48.0	157'6"	2 900	2 800	6 170	2 900	6 390		
48.0	157'6"	3 400	3 200	7 060	3 400	7 500	50.0	164'1"	2 500	2 500	5 510	2 500	5 510		
49.2	161'5"	3 200	3 000	6 610	3 200	7 060	52.0	170'7"	2 200	2 200	4 850	2 200	4 850		
							54.0	177'2"	1 900	1 900	4 190	1 900	4 190		
							54.4	178'6"	1 900	1 900	4 190	1 900	4 190		

Boom length	Working radius		Rated load				
			JIS rating	BS rating		PCSA rating	
m(ft in)	m	ft in	kg	kg	lb	kg	lb
64.0 (210'0")	12.9	42'4"	19 200	16 300	35 940	19 200	42 330
	14.0	45'11"	18 500	15 500	34 170	18 500	40 790
	16.0	52'6"	17 300	15 100	33 290	17 300	38 140
	18.0	59'1"	16 100	14 300	31 530	16 100	35 490
	20.0	65'7"	14 900	13 600	29 980	14 300	31 530
	22.0	72'2"	12 900	12 800	28 220	12 400	27 340
	24.0	78'9"	11 200	11 100	24 470	10 800	23 810
	26.0	85'4"	9 900	9 700	21 390	9 500	20 940
	28.0	91'10"	8 700	8 500	18 740	8 400	18 520
	30.0	98'5"	7 800	7 500	16 540	7 500	16 540
	32.0	105'0"	6 900	6 700	14 770	6 700	14 770
	34.0	111'7"	6 200	5 900	13 010	6 000	13 230
	36.0	118'1"	5 600	5 300	11 680	5 400	11 910
	38.0	124'8"	5 000	4 700	10 360	4 800	10 580
	40.0	131'3"	4 500	4 200	9 260	4 300	9 480
	42.0	137'10"	3 900	3 700	8 160	3 900	8 600
	44.0	144'4"	3 500	3 300	7 280	3 500	7 720
	46.0	150'11"	3 000	2 900	6 390	3 000	6 610
48.0	157'6"	2 600	2 600	5 730	2 600	5 730	
50.0	164'1"	2 300	2 300	5 070	2 300	5 070	
52.0	170'7"	2 000	2 000	4 410	2 000	4 410	
54.0	177'2"	1 700	1 700	3 750	1 700	3 750	
67.0 (219'10")	13.5	44'4"	17 300	15 100	33 290	17 300	38 140
	14.0	45'11"	17 000	15 000	33 070	17 000	37 480
	16.0	52'6"	16 300	14 400	31 750	16 100	35 490
	18.0	59'1"	15 600	13 800	30 420	15 100	33 290
	20.0	65'7"	14 700	13 200	29 100	14 200	31 310
	22.0	72'2"	12 700	12 600	27 780	12 200	26 900
	24.0	78'9"	11 100	10 900	24 030	10 700	23 590
	26.0	85'4"	9 700	9 500	20 940	9 400	20 720
	28.0	91'10"	8 600	8 400	18 520	8 300	18 300
	30.0	98'5"	7 600	7 400	16 310	7 300	16 090
	32.0	105'0"	6 800	6 500	14 330	6 500	14 330
	34.0	111'7"	6 100	5 800	12 790	5 800	12 790
	36.0	118'1"	5 400	5 100	11 240	5 200	11 460
	38.0	124'8"	4 800	4 500	9 920	4 700	10 360
	40.0	131'3"	4 300	4 000	8 820	4 200	9 260
	42.0	137'10"	3 700	3 500	7 720	3 700	8 160
	44.0	144'4"	3 300	3 100	6 830	3 300	7 280
	46.0	150'11"	2 800	2 700	5 950	2 800	6 170
48.0	157'6"	2 400	2 400	5 290	2 400	5 290	
50.0	164'1"	2 100	2 100	4 630	2 100	4 630	
52.0	170'7"	1 800	1 800	3 970	1 800	3 970	
54.0	177'2"	1 500	1 500	3 310	1 500	3 310	

Boom length	Working radius		Rated load				
			JIS rating	BS rating		PCSA rating	
m(ft in)	m	ft in	kg	kg	lb	kg	lb
70.0 (229'8")	14.0	45'11"	15 500	13 400	29 540	15 500	34 170
	16.0	52'6"	14 700	12 800	28 220	14 700	32 410
	18.0	59'1"	14 000	12 300	27 120	13 800	30 420
	20.0	65'7"	13 300	11 800	26 010	13 000	28 660
	22.0	72'2"	12 500	11 200	24 690	12 100	26 680
	24.0	78'9"	10 900	10 700	23 590	10 500	23 150
	26.0	85'4"	9 500	9 300	20 500	9 200	20 280
	28.0	91'10"	8 400	8 100	17 860	8 100	17 860
	30.0	98'5"	7 400	7 100	15 650	7 100	15 650
	32.0	105'0"	6 600	6 300	13 890	6 300	13 890
	34.0	111'7"	5 900	5 500	12 130	5 600	12 350
	36.0	118'1"	5 200	4 900	10 800	5 000	11 020
	38.0	124'8"	4 600	4 300	9 480	4 500	9 920
	40.0	131'3"	4 000	3 800	8 380	4 000	8 820
	42.0	137'10"	3 500	3 300	7 280	3 500	7 720
	44.0	144'4"	3 000	2 900	6 390	3 000	6 610
	46.0	150'11"	2 600	2 500	5 510	2 600	5 730
	48.0	157'6"	2 200	2 200	4 850	2 200	4 850
50.0	164'1"	1 800	1 800	3 970	1 800	3 970	
52.0	170'7"	1 500	1 500	3 310	1 500	3 310	
73.0 (239'6")	14.5	47'7"	13 800	11 700	25 790	13 800	30 420
	16.0	52'6"	13 300	11 400	25 130	13 300	29 320
	18.0	59'1"	12 600	10 900	24 030	12 500	27 560
	20.0	65'7"	12 000	10 500	23 150	11 800	26 010
	22.0	72'2"	11 300	10 000	22 050	11 100	24 470
	24.0	78'9"	10 600	9 600	21 160	10 300	22 710
	26.0	85'4"	9 300	9 100	20 060	9 000	19 840
	28.0	91'10"	8 200	7 900	17 420	7 900	17 420
	30.0	98'5"	7 200	6 900	15 210	6 900	15 210
	32.0	105'0"	6 400	6 100	13 450	6 100	13 450
	34.0	111'7"	5 600	5 300	11 680	5 400	11 910
	36.0	118'1"	5 000	4 600	10 140	4 800	10 580
38.0	124'8"	4 300	4 100	9 040	4 300	9 480	
40.0	131'3"	3 700	3 500	7 720	3 700	8 160	
42.0	137'10"	3 200	3 100	6 830	3 200	7 060	
44.0	144'4"	2 700	2 700	5 950	2 700	5 950	
46.0	150'11"	2 300	2 300	5 070	2 300	5 070	
48.0	157'6"	1 900	1 900	4 190	1 900	4 190	
50.0	164'1"	1 500	1 500	3 310	1 500	3 310	

Rated Load for Main Boom

Notes:

1. The rated loads shown are based on the machine on firm level ground without traveling.
2. The rated loads shown include the weight of all lifting attachments such as hook, bucket, etc. The load to be actually lifted will be the rated load minus the weight of all lifting attachments.
3. The rated load for auxiliary jib hook is equal to that of main hook at the same working radius, but do not exceed maximum rated load 10 000 kg (22 040 lb)
4. When the jib boom is attached to the main boom, the load to be actually lifted will be the rated load minus weight of jib boom.

Jib length	9.0 m (29'6")	13.5 m (44'4")	18.0 m (59'1")	22.5 m (73'10")
Jib weight	1 350 kg (2 980 lb)	1 650 kg (3 640 lb)	1 950 kg (4 300 lb)	2 250 kg (4 960 lb)

5. When the auxiliary jib is attached to the main boom, the load to be actually lifted is the rated load minus auxiliary jib weight.
Auxiliary jib weight350 kg (770 lb)

6. The jib can be attached to boom of 40 m (131'3") to 64 m (210'0") long. In case of 64 m (210'0") boom, the maximum jib length is 13.5 m (44'4") long.
7. The auxiliary jib can be attached to the main boom of 16 m (52'6") to 67 m (219'10") long.
8. Counterweight is 33 000 kg (72 800 lb)

Rated Load for Jib

Maximum jib rating

Jib length		9.0 m (29'6")	13.5 m (44'4")	18.0 m (59'1")	22.5 m (73'10")
Jib offset angle					
Max. rated load	10°	1 000 kg (2 210 lb)	1 000 kg (2 210 lb)	5 950 kg (13 120 lb)	3 500 kg (7 720 lb)
	30°	9 300 kg (20 500 lb)	5 700 kg (12 570 lb)	4 000 kg (8 820 lb)	2 500 kg (5 510 lb)

Notes:

1. The rated load for jib is equal to that of the main boom at the same working radius, but should not exceed maximum jib ratings shown. The jib offset angle to the main boom is under loaded condition.
2. The maximum working radius of the jib do not exceed that of the main boom used.