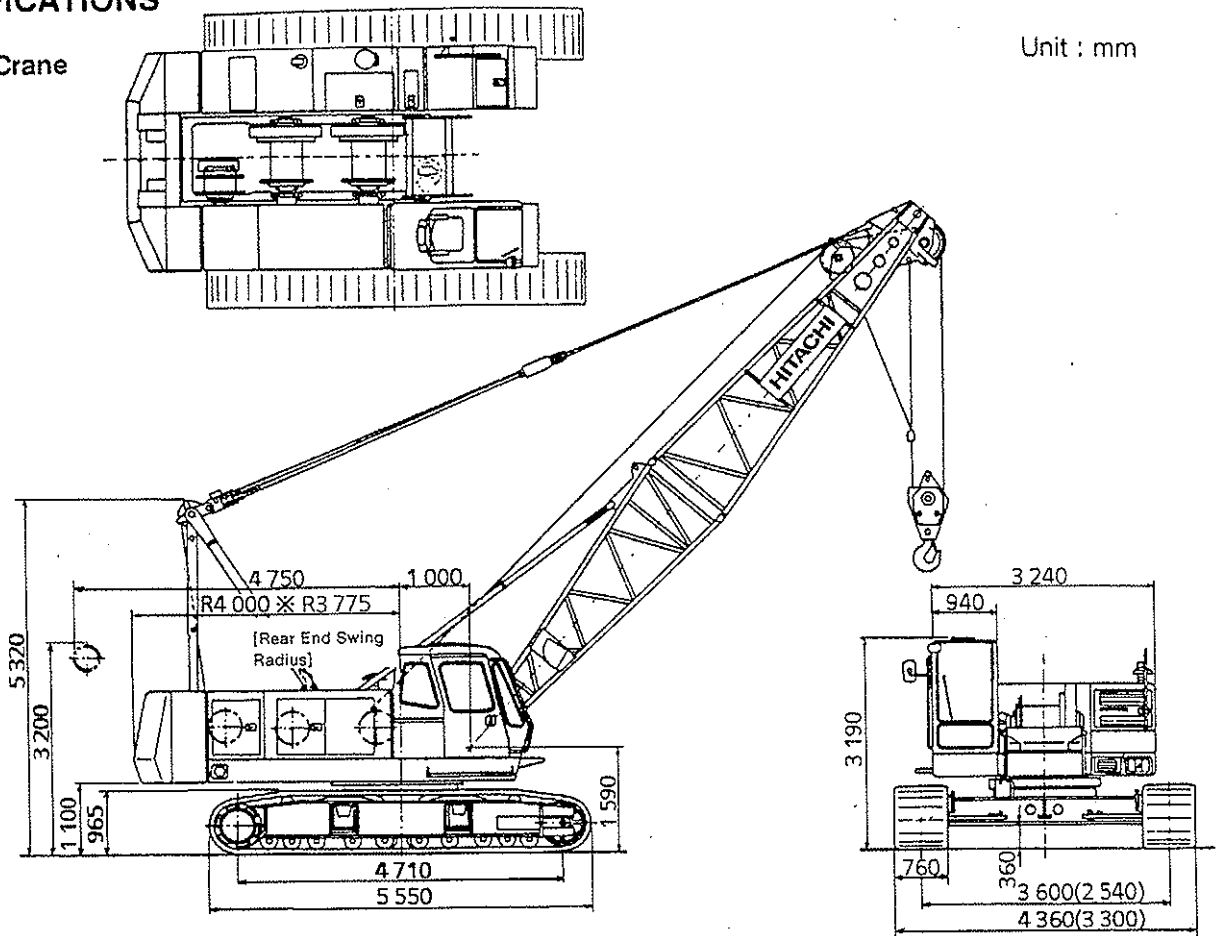


SPECIFICATIONS

SPECIFICATIONS

Crawler Crane

Unit : mm



M324-12-001

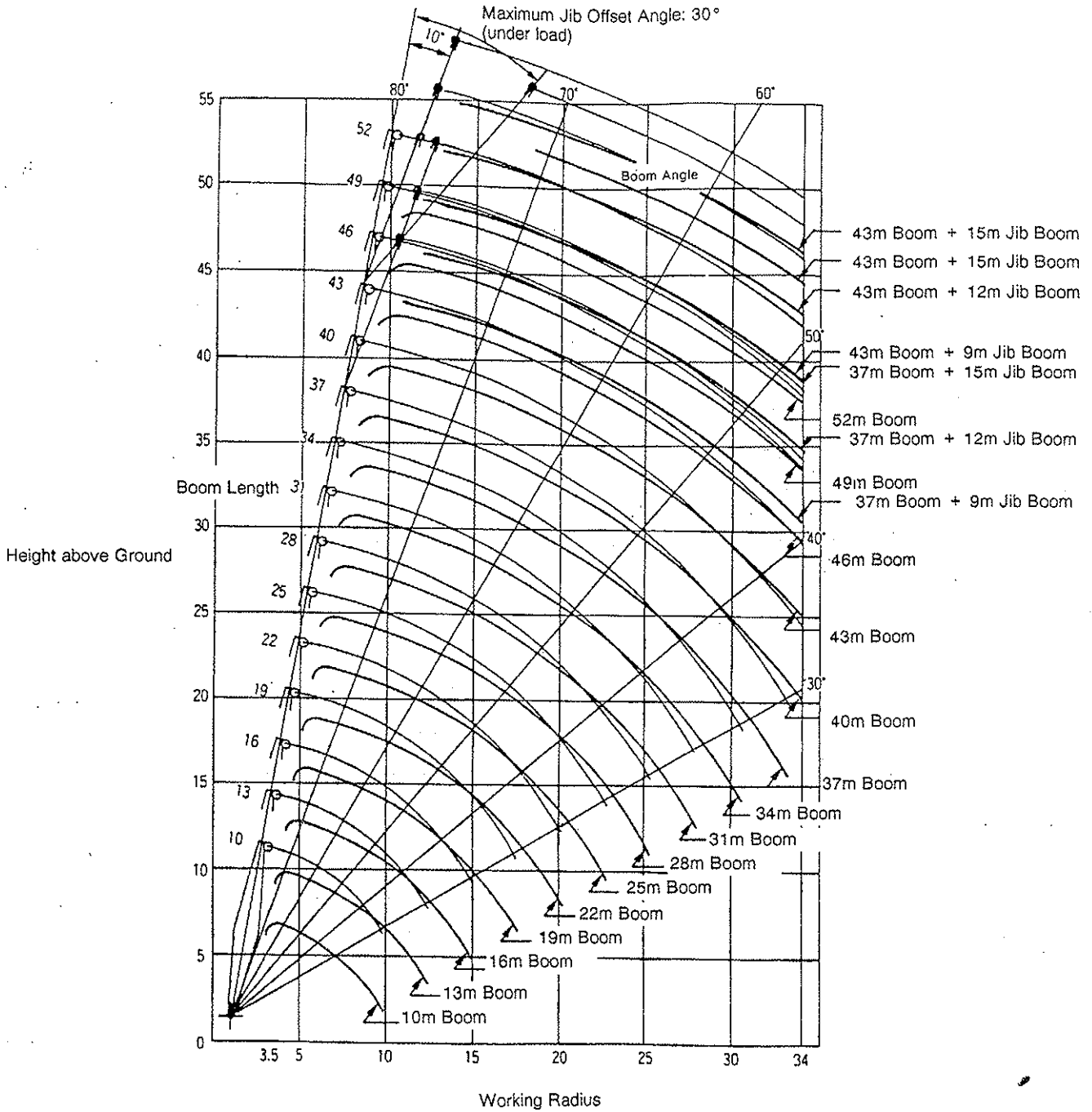
Maximum Lifting Load	t × m	50 × 3.8
Basic Boom Length	m	10
Maximum Boom Length	m	52
Jib Boom Length	m	6 to 15
Boom + Jib Boom Length	m	43 + 15
Main Hoist Wire Rope Speed (Hoist/Lower)	m/min	* 100 / 65 / 32
Aux. Hoist Wire Rope Speed (Hoist/Lower)	m/min	* 100 / 65 / 32
Boom Hoist Wire Rope Speed (Raise/Lower)	m/min	* 53
Swing Speed	min ⁻¹ (rpm)	4.0 (4.0)
Travel Speed	km/h	* 1.7/1.4
Gradeability	% (Degree)	40 (22)
Engine Name		Hino Diesel Engine H07C-T
Engine Rated Horse Power	kW/min ⁻¹ (PS/rpm)	132 / 2 000 (180 / 2 000)
Ground Pressure	kPa (kgf/cm ²)	62.8 (0.64)
Operating Mass	t	49.0 (with 10 m boom + 50t hook)
		49.4 (with 10 m boom + 50t hook + casting counterweight)

NOTE: SI units are used for specifications. In parenthesis, conventional units are also indicated.

Speeds marked with "*" should be referred to only when the machine is used as a crane. Also, note that "*" marked values may vary depending on load applied.

SPECIFICATIONS

WORKING RANGES



M324-12-002

SPECIFICATIONS

TUBULAR CHORD CRANE BOOM RATED LOAD (PCSA Rating)

Unit: t

Working Radius (m)	Boom Length (m)														
	10	13	16	19	22	25	28	31	34	37	40	43	46	49	52
3.5	50.00	3.8m × 50.00t													
4.0	46.70	46.65	4.4m × 39.70t												
4.5	38.30	38.25	38.20												
5.0	32.45	32.40	32.30	32.30											
5.5	28.10	28.05	28.00	27.95	27.60										
6.0	24.80	24.70	24.65	24.60	24.55	6.1m × 23.85t	6.7m × 20.90t								
7.0	20.00	19.90	19.80	19.75	19.70	19.70	19.60	7.3m × 18.60t	7.8m × 16.65t						
8.0	16.70	16.60	16.50	16.45	16.40	16.35	16.30	16.25	16.15	8.4m × 15.05t					
9.0	14.30	14.20	14.10	14.05	14.00	13.95	13.85	13.85	13.75	13.65	13.65	9.6m × 12.50t			
10.0	9.8m × 12.65t	12.40	12.30	12.25	12.20	12.15	12.05	12.00	11.90	11.85	11.80	11.75	10.1m × 11.45t	10.7m × 10.55t	11.3m × 9.45t
12.0		9.85	9.70	9.65	9.60	9.55	9.45	9.40	9.30	9.25	9.20	9.10	9.05	8.95	8.90
14.0		12.4m × 9.40t	8.00	7.90	7.85	7.80	7.70	7.65	7.55	7.45	7.45	7.35	7.30	7.20	7.10
16.0			15.0m × 7.30t	6.70	6.60	6.55	6.45	6.40	6.30	6.20	6.20	6.10	6.00	5.95	5.85
18.0				17.8m × 5.90t	5.65	5.60	5.50	5.40	5.35	5.25	5.20	5.15	5.05	4.95	4.90
20.0					4.90	4.85	4.75	4.70	4.60	4.50	4.45	4.40	4.30	4.20	4.15
22.0					20.2m × 4.85t	4.25	4.15	4.10	4.00	3.90	3.85	3.80	3.70	3.60	3.55
24.0						22.8m × 4.05t	3.65	3.60	3.50	3.40	3.40	3.30	3.20	3.10	3.05
26.0							25.4m × 3.40t	3.20	3.10	3.00	2.95	2.85	2.80	2.70	2.60
28.0								2.85	2.75	2.65	2.60	2.55	2.45	2.35	2.25
30.0									2.45	2.35	2.35	2.25	2.15	2.05	1.95
32.0									30.6m × 2.40t	2.10	2.05	1.95	1.85	1.75	1.65
34.0										33.2m × 1.90t	1.80	1.75	1.60	1.50	1.35

- NOTE:1.** The rated loads are determined according to PCSA (Power Crane and Shovel Association in USA) and do not exceed 75% of tipping load on condition that the machine is stationed on firm, level ground.
- 2.** The rated loads shown include the weight of all lifting attachments such as hook, bucket, etc. The load to be actually lifted will be the rated load minus the weight of all lifting attachments.

SPECIFICATIONS

JL&R CHORD CRANE BOOM RATED LOAD (BS Rating)

Unit: t

	Boom Length (m)													
	10	13	16	19	22	25	28	31	34	37	40	43	46	49
50.00	3.8m × 50.00t													
48.05	47.85	4.4m × 41.05t												
40.10	39.80	39.75												
33.75	33.70	33.60	33.60											
29.25	29.15	29.10	29.05	28.70										
25.75	25.70	25.60	25.60	25.50	6.1m × 24.80t	6.7m × 21.75t								
20.75	20.70	20.60	20.55	20.50	20.45	20.35	7.3m × 19.35t	7.8m × 17.30t						
17.35	17.25	17.20	17.15	17.05	17.00	16.95	16.90	16.80	8.4m × 15.65t					
14.90	14.80	14.70	14.65	14.55	14.50	14.45	14.45	14.30	14.20	14.20	9.6m × 13.00t			
9.8m × 12.65t	12.90	12.80	12.75	12.65	12.60	12.50	12.50	12.40	12.30	12.30	12.20	10.1m × 11.95t	10.7m × 10.70t	
	10.25	10.10	10.05	9.95	9.90	9.80	9.80	9.70	9.60	9.60	9.50	9.40	9.35	
	12.4m × 9.80t	8.30	8.25	8.15	8.10	8.00	7.95	7.85	7.75	7.75	7.65	7.55	7.50	
		15.0m × 7.60t	6.95	6.85	6.80	6.70	6.65	6.55	6.45	6.40	6.30	6.20	6.15	
			17.6m × 6.15t	5.85	5.80	5.70	5.65	5.55	5.45	5.40	5.30	5.20	5.10	
				5.10	5.05	4.90	4.85	4.75	4.65	4.60	4.50	4.40	4.30	
				20.2m × 5.05t	4.40	4.30	4.20	4.10	4.00	3.95	3.85	3.75	3.65	
					22.8m × 4.20t	3.75	3.70	3.60	3.50	3.45	3.30	3.25	3.15	
						25.4m × 3.45t	3.25	3.15	3.05	3.00	2.90	2.80	2.70	
							2.90	2.80	2.70	2.60	2.50	2.40	2.30	
								2.50	2.35	2.30	2.20	2.10	2.00	
									30.6m × 2.40t	2.10	2.05	1.90	1.80	1.75
										33.2m × 1.90t	1.80	1.70	1.60	1.50

The rated loads are determined according to BS (British Standard; 1981) on condition that the machine is stationed on firm, level ground.
 The rated loads shown include the weight of all lifting attachments such as hook, bucket, etc. The load to be actually lifted will be the rated load minus the weight of all lifting attachments.

8
 23
 25
 24
 14
 01
 00
 75
 75
 07
 98
 99
 18
 31
 40
 863
 819
 72
 320
 43
 328
 238
 236
 109
 108
 111
 71
 103
 269
 271
 321
 102
 283
 321
 380
 67
 30
 125
 258
 253
 256
 284
 68
 380
 123
 124

SPECIFICATIONS

AUX. JIB RATED LOAD (JIS Rating)

Unit : t

Working Radius (m)	Boom Length (m)													
	13	16	19	22	25	28	31	34	37	40	43	46	49	
4.5	4.7m×6.50t													
5.0	6.50	5.2m×6.50t												
5.5	6.50	6.50	5.8m×6.50t											
6.0	6.50	6.50	6.50	6.4m×6.50t										
7.0	6.50	6.50	6.50	6.50	6.50	7.5m×6.50t								
8.0	6.50	6.50	6.50	6.50	6.50	6.50	8.1m×6.50t	8.7m×6.50t						
9.0	6.50	6.50	6.50	6.50	6.50	6.50	6.50	6.50	9.2m×6.50t	9.8m×6.50t				
10.0	6.50	6.50	6.50	6.50	6.50	6.50	6.50	6.50	6.50	6.50	10.4m×6.50t	10.9m×6.50t	11.5m×6.50t	
12.0	6.50	6.50	6.50	6.50	6.50	6.50	6.50	6.50	6.50	6.50	6.50	6.50	6.50	
14.0	13.5m×6.50t	6.50	6.50	6.50	6.50	6.50	6.50	6.50	6.50	6.50	6.50	6.50	6.50	
16.0		6.50	6.50	6.50	6.50	6.50	6.50	6.50	6.45	6.35	6.35	6.25	6.15	6.05
18.0		16.1m×6.50t	5.85	5.75	5.70	5.60	5.55	5.45	5.35	5.30	5.20	5.15	5.05	
20.0			18.7m×5.55t	5.00	4.95	4.80	4.75	4.65	4.55	4.55	4.45	4.35	4.25	
22.0				21.3m×4.55t	4.30	4.20	4.15	4.05	3.95	3.90	3.80	3.70	3.65	
24.0					23.9m×3.80t	3.70	3.65	3.55	3.45	3.40	3.30	3.20	3.10	
26.0						3.30	3.20	3.10	3.00	2.95	2.85	2.75	2.65	
28.0							26.5m×3.20t	2.85	2.75	2.65	2.60	2.45	2.35	2.25
30.0								29.1m×2.65t	2.45	2.30	2.25	2.10	2.00	1.90
32.0									31.7m×2.20t	2.05	1.95	1.80	1.70	1.60
34.0										1.80	1.65	1.55	1.45	1.30

- NOTE:**
1. Crane capacities shown above are determined according to JIS and do not exceed 78 % of tipping load with crane standing on a firm, level surface. Forward stability is 1.15 or more.
 2. To calculate the maximum load that can actually be lifted, deduct weight of all lifting accessories, such as main and aux. hooks, from figures shown above.

3. Working radius is the horizontal distance from the swing center to the center of gravity of a lifted load.
4. The can-type counterweight weighs 16.9 t while the casting counterweight weighs 17.3 t.
5. Be sure to fully extend the side frames before operating the machine.

Hook Weight

50 t Hook	0.61 t
30 t Hook	0.36 t
15 t Hook	0.32 t
6.5 t Hook	0.26 t

SPECIFICATIONS

MAIN BOOM RATED LOAD WITH AUX. JIB ATTACHED (JIS Rating)

Unit : t

Working Radius (m)	Boom Length (m)													
	13	16	19	22	25	28	31	34	37	40	43	46	49	
3.8	49.70													
4.0	47.55	4.4m × 41.20t												
4.5	39.50	39.45												
5.0	33.40	33.30	33.30											
5.5	28.85	28.80	28.75	28.40										
6.0	25.40	25.30	25.30	25.20	6.1m × 24.50t	6.7m × 21.45t								
7.0	20.40	20.30	20.25	20.20	20.15	20.05	7.3m × 19.05t	7.8m × 17.00t						
8.0	16.95	16.90	16.85	16.75	16.70	16.65	16.60	16.50	8.4m × 15.35t					
9.0	14.50	14.40	14.35	14.25	14.20	14.15	14.15	14.00	13.90	13.90	9.6m × 12.70t			
10.0	12.60	12.50	12.45	12.35	12.30	12.20	12.20	12.10	12.00	12.00	11.90	10.1m × 11.65t	10.7m × 10.40t	
12.0	9.95	9.80	9.75	9.65	9.60	9.50	9.50	9.40	9.30	9.30	9.20	9.10	9.05	
14.0	12.4m × 9.50t	8.00	7.95	7.85	7.80	7.70	7.65	7.55	7.45	7.45	7.35	7.25	7.20	
16.0		15.0m × 7.30t	6.65	6.55	6.50	6.40	6.35	6.25	6.15	6.10	6.05	5.95	5.85	
18.0			17.6m × 5.85t	5.55	5.50	5.40	5.35	5.25	5.15	5.15	5.05	4.95	4.85	
20.0				4.80	4.75	4.65	4.55	4.45	4.40	4.35	4.25	4.15	4.10	
22.0				20.2m × 4.75t	4.10	4.05	3.95	3.85	3.75	3.70	3.65	3.55	3.45	
24.0					22.2m × 3.90t	3.50	3.45	3.35	3.25	3.20	3.10	3.05	2.95	
26.0						25.4m × 3.20t	3.00	2.90	2.85	2.80	2.70	2.60	2.50	
28.0							2.65	2.55	2.45	2.40	2.35	2.20	2.10	
30.0								2.25	2.15	2.10	2.00	1.85	1.75	
32.0									30.6m × 2.10t	1.90	1.80	1.70	1.55	1.45
34.0										33.2m × 1.60t	1.50	1.45	1.30	1.20

- NOTE:**
1. Crane capacities shown above are determined according to JIS and do not exceed 78 % of tipping load with crane standing on a firm, level surface. Forward stability is 1.15 or more.
 2. To calculate the maximum load that can actually be lifted, deduct weight of all lifting accessories, such as main hook, from figures shown above.
 3. Working radius is the horizontal distance from the swing center to the center of gravity of a lifted load.
 4. The can-type counterweight weighs 16.9 t while the casting counterweight weighs 17.3 t.
 5. Be sure to fully extend the side frames before operating the machine.

6. Correlations between the number of falls, maximum rated loads, hook weights are shown in the table below.

Hook Capacity (t)	Hook Weight (t)	Maximum Rated Load (t)								
		8 Falls	7 Falls	6 Falls	5 Falls	4 Falls	3 Falls	2 Falls	1 Fall	
50.0	0.61	49.7	45.5	39.0	32.5	26.0	19.5	13.0	—	
30.0	0.36				30.0	26.0	19.5	13.0	—	
15.0	0.32						15.0	13.0	—	
6.5	0.26								6.5	